

## Socio-economic contribution 2004 in Måløv

Novo Nordisk's operations in Måløv create jobs for our own employees, for suppliers and shopkeepers, and in the public sector. In 2004 our overall socio-economic contribution in Greater Copenhagen can be set at 2,004 jobs (1,033 direct jobs and 971 indirect jobs)<sup>1)</sup>. The chart below provides an overview of the interaction between key stakeholders, with emphasis on the contribution of local players.

### Employees

Novo Nordisk employees (1,033 in 2004) account for around 3% of Ballerup Municipality's jobs. 376 of Novo Nordisk's employees live in Ballerup Municipality, 68 of whom work for Novo Nordisk in Måløv. Employees pay DKK 57 million in tax to the municipalities in which they live, of which DKK 21 million goes to Ballerup Municipality<sup>1)</sup>. Their private consumption contributes to some 282 further jobs in the region, 13 of these in Ballerup Municipality. They also contribute property taxes etc, and the remainder of their income tax, which goes to the state.

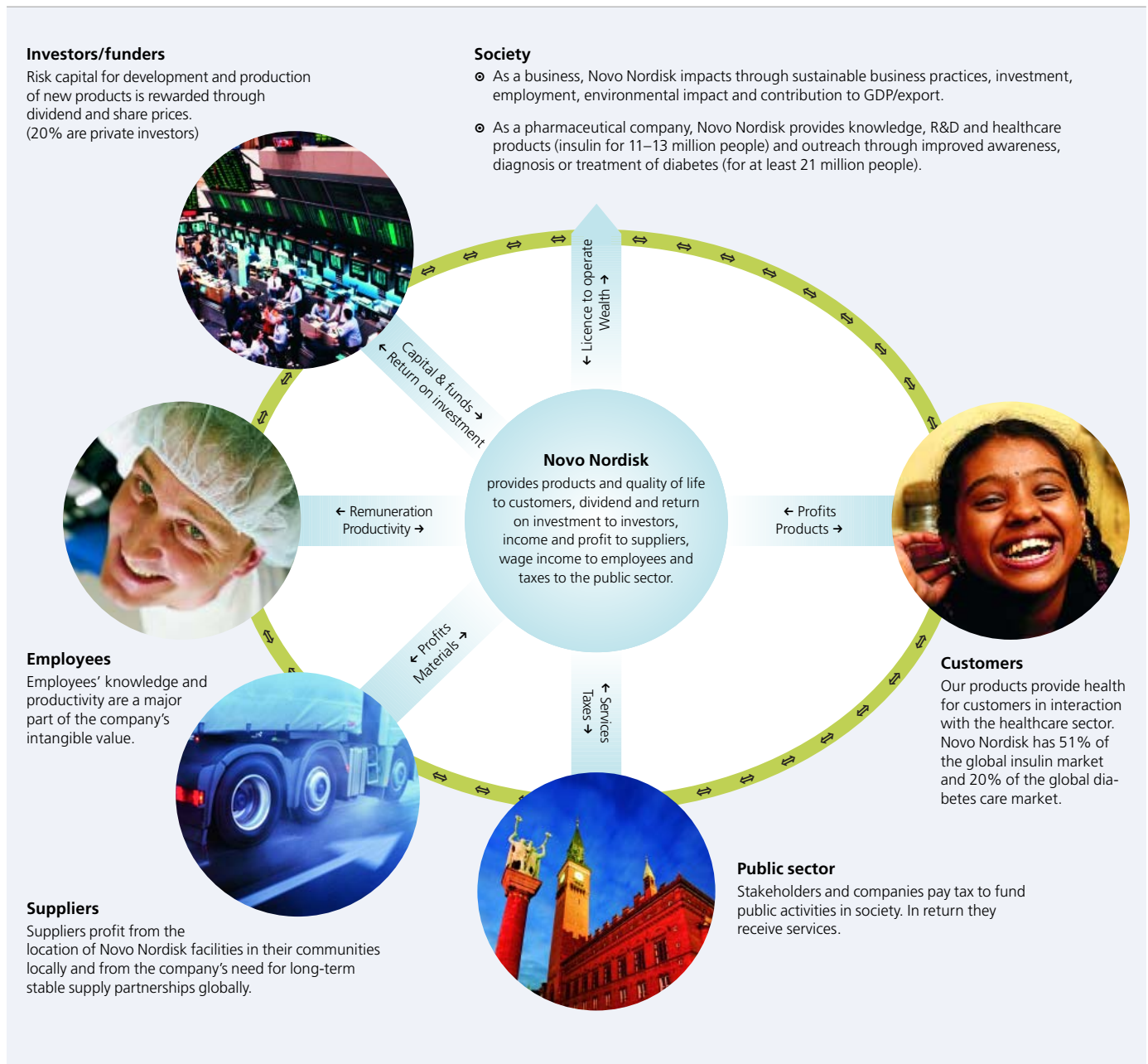
### Suppliers

Novo Nordisk in Måløv is estimated to create the basis for 90 jobs locally, and 689 jobs overall in Greater Copenhagen. These jobs are estimated to contribute municipal income tax of around DKK 18 million in the region<sup>1)</sup>, of which DKK 2 million goes to Ballerup Municipality. Additionally, income tax is paid to the state.

### The public sector

The company, our own employees and local suppliers' employees pay taxes to the municipality<sup>1)</sup> totalling around DKK 48 million. However, the contribution to the municipality is only DKK 20 million because equalisation systems would compensate for the lower tax revenue if these citizens and companies did not live or carry on business in the municipality.

Novo Nordisk pays around 13% of the company tax to the municipalities, and DKK 6 million in energy and environmental taxes to Ballerup Municipality.



<sup>1)</sup> The socio-economic contributions of jobs and taxes are based on a series of assumptions regarding, among other things, local purchase habits and multipliers for Greater Copenhagen. Personal income and tax payments are reduced by the income and taxes that these persons would otherwise have; calculated here as unemployment benefit.